



Curious Design & Ultimate Range



Vipul Flight Case

Shed No. 04, J. K. Industrial Park, AT-Ravki,
Ta-Lodhika, Dist. Rajkot 360004.

Mo.: 99245 33005, 99242 33005

E-mail : vipulflightcase@gmail.com

Web.: www.vipulflightcase.co.in





OUR MISSION :-

To manufacture world-class products of outstanding quality that give our customers a competitive advantage through superior products and value, so we can make every customer smile.

OUR VISION :-

To manufacture products comparable to international standards, to be customer-focused and globally competitive through better quality, latest technology and continuous innovation.



- **VFC Audio**
- **VFC Industries**
- **VFC Technology**
- **Vipul Flight Case**



Specifications

Type	MS Black Coating
Height	22mm x 875mm / 16mm x 825mm
Leg	300mm
Weight	1.900kg.

Approx



Specifications

Type	MS Black Coating
Height	22mm x 570mm / 16mm x 558mm
Leg	300mm
Weight	1.500kg.

Approx



Specifications

Type	MS Black Coating
Height	22mm x 390mm / 16mm x 380mm
Leg	200mm
Weight	1.200kg.

Approx



Specifications

Type	Stainless Steel
Height	22mm x 875mm / 16mm x 825mm
Leg	300mm
Weight	1.900kg.

Approx



Specifications

Type	Stainless Steel
Height	22mm x 570mm / 16mm x 558mm
Leg	300mm
Weight	1.500kg.

Approx



Specifications

Type	Stainless Steel
Height	22mm x 390mm / 16mm x 380mm
Leg	200mm
Weight	1.200kg.

Approx



Specifications

Type	MS Black Coating
Height	22mm x 875mm / 16mm x 825mm
Base Dia	250mm
Weight	4.800kg.

Approx



Specifications

Type	MS Black Coating
Height	22mm x 570mm / 16mm x 558mm
Base Dia	250mm
Weight	4.300kg.

Approx



Specifications

Type	MS Black Coating
Height	22mm x 390mm / 16mm x 380mm
Base Dia	175mm
Weight	2.500kg.

Approx



Specifications

Type	Stainless Steel
Height	22mm x 875mm / 16mm x 825mm
Base Dia	250mm
Weight	4.800kg.

Approx



Specifications

Type	Stainless Steel
Height	22mm x 570mm / 16mm x 558mm
Base Dia	250mm
Weight	4.300kg.

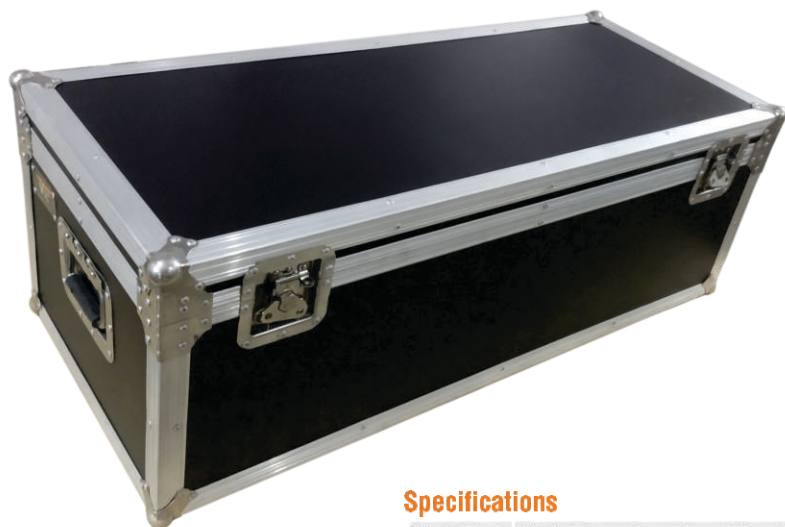
Approx



Specifications

Type	Stainless Steel
Height	22mm x 390mm / 16mm x 380mm
Base Dia	175mm
Weight	2.500kg.

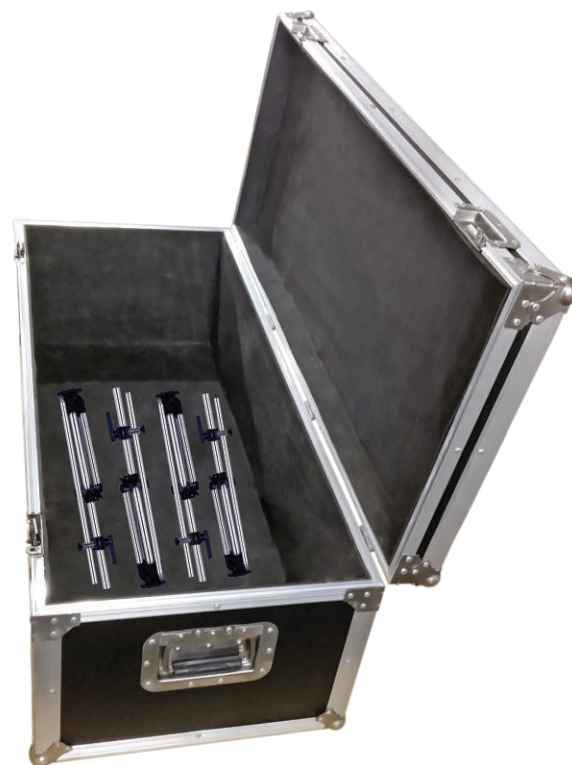
Approx



Specifications

Brand	VFC
Model	Mic Stand
Dimension	406x330x970mm
Material	Wooden, Aluminium, Metal

Approx



Specifications

Brand	VFC
Model	Mic Stand
Dimension	430x444x1005mm
Material	Wooden, Aluminium, Metal

Approx



Specifications

Type	Casting Black Coating
Base Dia	175mm
Thread	22 x 1.5 mm
Weight	1.700kg.

Approx



Specifications

Type	Casting Black Coating
Base Dia	250mm
Thread	22 x 1.5 mm
Weight	3.300kg.

Approx

DJ CASE



MIC CASE



PROCESSOR RACK



WIRELESS RACK



AMPLIFIER CASE



DEMO CASE



MIXER CASE



CUSTOMIZE CASE



ETC. PROTECTION BOARD



ETC. PROTECTION BOARD



SPEAKER CASE



DIAMOND TABLE





- To attain highest level of efficiency, integrity and honesty.
- Concern for the environment and the community.
- Customer's satisfaction and delight.
- End to end, User-friendly Solutions.
- To promote healthy work habits.
- Passionate about excellence.